



## MONICA is a state-of-the-art ground station monitoring and control solution, designed primarily for the satellite industry.

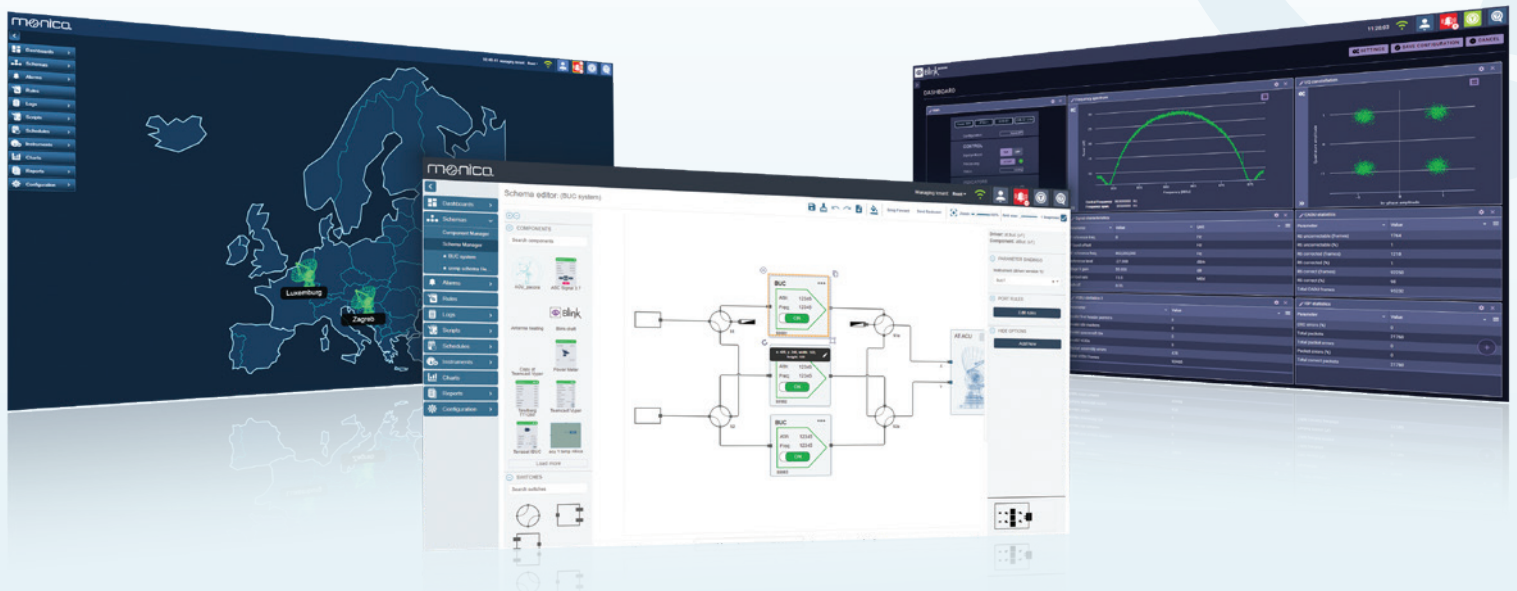
Over the past 25+ years, Amphinity has gained in-depth knowledge and experience in **delivering M&C solutions** to some of the most demanding customers globally.

Our solution, MONICA, is **robust, secure, and reliable**, demonstrating high performance with the capacity to scale to any size of customer service.

Typical applications encompass RF and Optical SatCom, TV and Radio Broadcasting, Telecommunications, SCADA Systems, and Defence and Aerospace projects.



[monica.amphinity.com](http://monica.amphinity.com)



# Core features

- White-label, fully customisable M&C system
- Can be used as a standalone application or a framework for building custom solutions
- A multi-tenant system with robust security and user management
- HTML5 responsive web interface supports major modern web browsers
- Built on the leading open-source technologies, eliminating additional licenses
- Supports distributed and hierarchical deployments
- Runs virtually anywhere from on-premise hardware to cloud infrastructure
- Scalable to virtually unlimited number of instruments and parameters
- Simple configuration backup and restore
- Configurable look and feel with theming system
- Path and signal highlighting

## Modular architecture

- Schema/Mimics with an integrated drag and drop schema editor
- Flexible and rich dashboards with user-configurable widgets
- Flexible trending with multiple charts types
- Comprehensive and configurable reports
- Powerful alarming based on user-friendly rule definition and device-related constraints
- Simulation/Demo mode for easy instrument simulation

## Device management

- User-friendly, on-the-fly driver editor - no programming needed
- Integrated SNMP MIB browser and driver generator
- Supports a growing number of communication protocols such as SNMP, REST, TCP/UDP, ASCII/Binary, Modbus, and SQL
- Distributed device data collection via lightweight Remote Agents
- Fine-grained polling configuration for each parameter
- User-defined hard limits to prevent equipment and system damage

## Technical specification

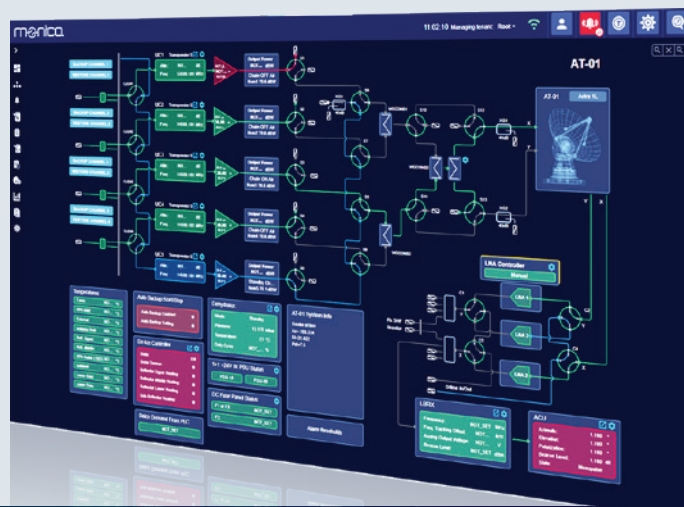
- Runs on bare metal, Docker-based, and cloud systems using RedHat, Debian and SLES-based operating systems, supporting x86 and ARM architectures
- Accessible from any device that supports modern web browsers including tablets and smartphones
- Zero downtime cluster/High availability mode
- Data persistence via PostgreSQL DBMS and TimescaleDB

## Advanced automation & orchestration

- Task automation via rule engine, scheduled jobs, or alarm-driven events
- Custom, sophisticated action scripting via Python/Groovy
- Macro recorder for user actions, including editor and executor
- One-click configuration of a subsystem using preset database
- Automatic device redundancy switching
- Automatic level control
- Site diversity switching

## Integration

- Integration with third-party directory services via SSO providers
- Extensive northbound interfaces for integration with third-party OSS/BSS systems: REST/WebSocket, SNMP, MQTT



**MONICA is a critical building block of any ground station.**



[www.amphinicy.com](http://www.amphinicy.com)